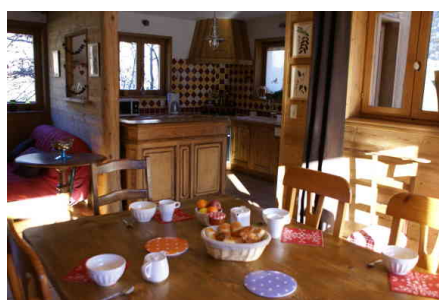


CHALET LA SAUVIRE

Resort : Champagny-en-Vanoise

New chalet of wood and stone, South exposure, with the genuine feel, whose volumes (about 120 m²), forms and materials remain loyal to the Savoyard tradition. The chalet "La Sauvire" is situated in the "Hameau des Rochers" district, at the entrance of the ski resort, at 1200 m from the centre and the ski lifts. Free shuttle service to downtown (access to the gondola by elevator) and also to Champagny-le-Haut valley. Only in winter.

CHALET DUPLEX 5 PIÈCES 8-10 PERSONNES



Non-contructal picture(s).