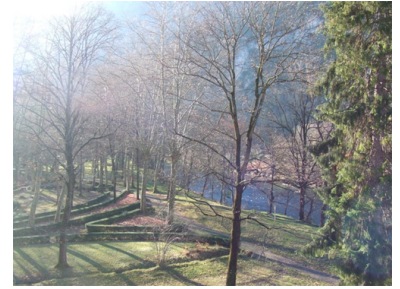


RESIDENCE NAPOLEON

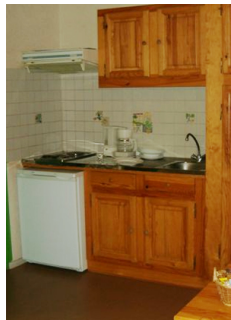
Resort : Plateau de Beille/ Ussat-les-Bains

Residence Napoleon, built in 1992, offers its clients 28 apartments type T1, spread over 4 floors and connected by lift. Situated in the grounds of Ussat-les-Bains, the Tourisme Residence 2** ranked faces the historic Spa "Fraxine", building today filed for its beautiful architecture of the nineteenth century. The apartments have been equipped to offer a perfect autonomy to the residents. The Plateau de Beille, resort for Cross Country Skiing, snowshoe and sled dog, is located 22 km. All shops in Tarascon sur Ariege to 3 km.



Non-contractual picture(s).

APPARTEMENT 2 PIÈCES 4 PERSONNES



Non-contractual picture(s).